



CREATOR OF  
TIMELESS ORIGINALS®

# WOOD SPECIES & VENEERS



# WOOD SPECIES – SOLID

## Wood Species Options



- Cherry & Rustic Cherry
- Alder & Rustic Alder
- Maple
- Rift Cut White Oak
- Mahogany
- Walnut
- White Ash
- Pine
- Soft Maple (Paint Grade)



# WOOD SPECIES EXPAND DIFFERENTLY



Cherry



Hard Maple



Red Oak



# AFTER A 9% INCREASE IN MOISTURE



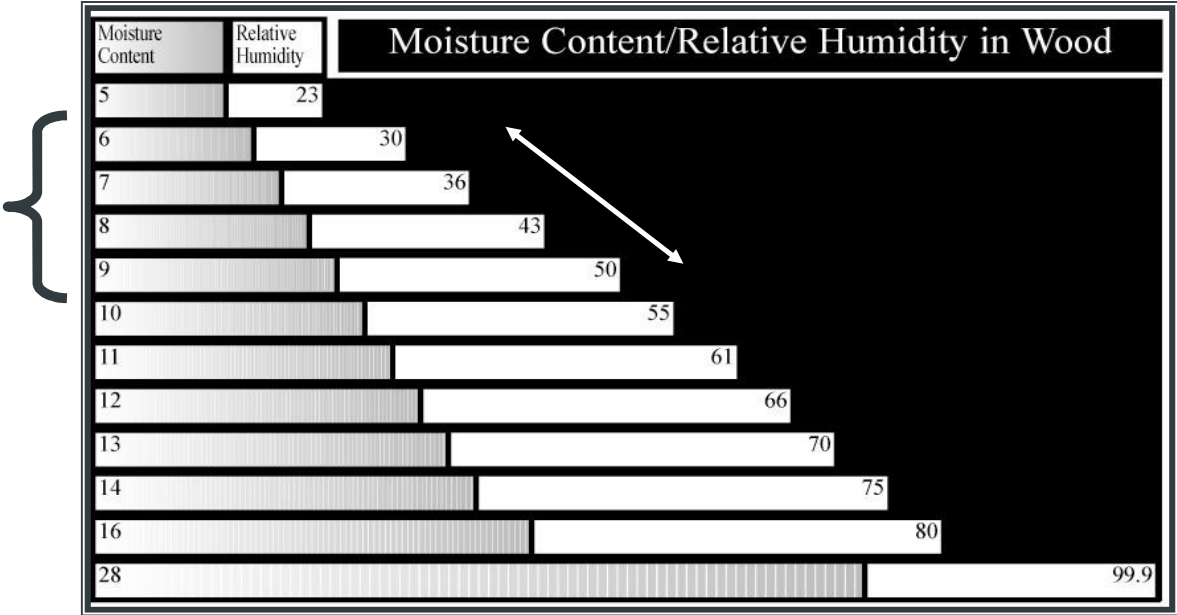


# WOOD SPECIES EXPAND DIFFERENTLY

Expansion of wood caused by an increase in moisture content	
← 12 inch wide sample of wood at 5% moisture content...	... and at 14% →
White Pine	12.23"
Mahogany	12.26"
Soft Maple	12.27"
Alder	12.27"
Cherry	12.27"
White Ash	12.29"
Walnut	12.29"
Lyptus	12.32"
Red Birch	12.36"
White Birch	12.36"
Hard Maple	12.38"
White Oak	12.39"
Red Oak	12.40"
Hickory	12.44"



# OPTIMAL RELATIVE HUMIDITY



RH Must be Less Than 50% to Maintain a 6% - 9% MC



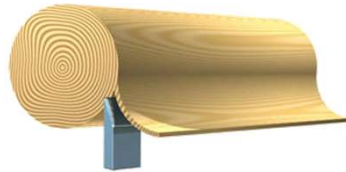
# NATURAL & ARCHITECTURAL COMPOSITE VENEERS



# WOOD VENEER CUTTING METHODS

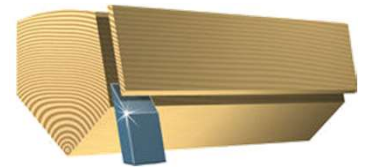
## Rotary Cut

- Log is placed on a lathe & rotated against a stationary knife
- Often produces random & wild grain



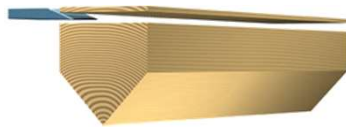
## Rift Cut

- Similar to quarter sawn, but the knife is set at a slight angle to minimize the “flake” effect
- Most commonly used for oak



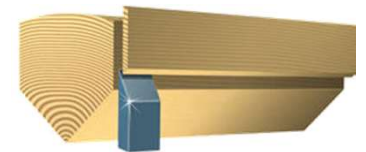
## Plain Sliced

- Slicing parallel to the log, a raised “cathedral effect” is formed by the innermost growth rings
- The most commonly used veneer type at RUTT



## Quarter Cut

- Log is cut into four equal quarters, then sliced perpendicular to the annual growth rings
- Creates a straight grained appearance
- Some woods, primarily oaks, a “Flake” effect results



# SPLICING VENEERS

## Book Match



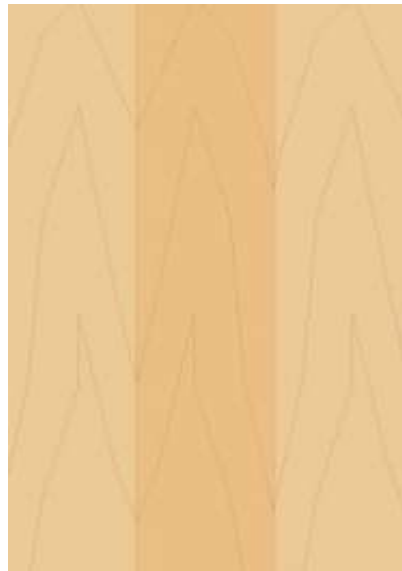
# SPLICING VENEERS

## Slip Match

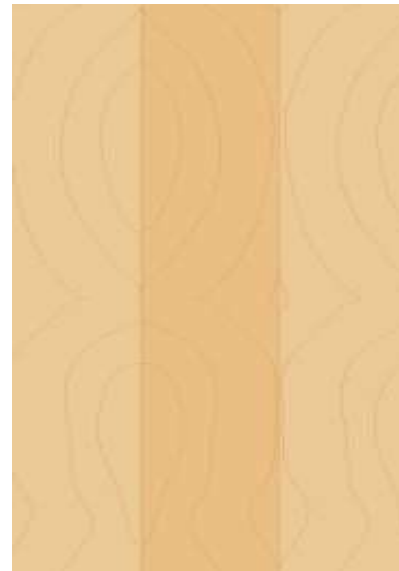


# SPLICING VENEERS

## Balanced Match



Book, Balance Match  
(plain sliced veneer)



Book, Balance Match  
(burl or wavy grain veneer)



# WHAT IS A COMPOSIT VENEER?

*Composite Veneer:* Produced by converting a bland African hardwood into a custom-patterned veneer through a system using molds and dyes.





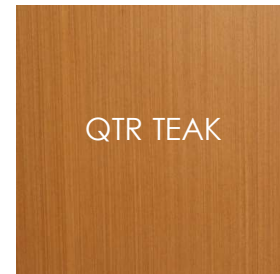
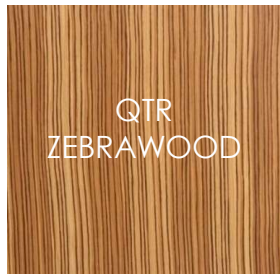
# THE BENEFITS & CHALLENGES OF COMPOSIT VENEERS



- Environmentally Friendly: Logged from managed forests and manufactured using environmentally sound principles
- Proven Technology: Manufactured in Europe for over 30 years
- Matching edge banding
- Consistency
- Man Made vs. Natural
- Aging



# COMPOSIT VENEERS



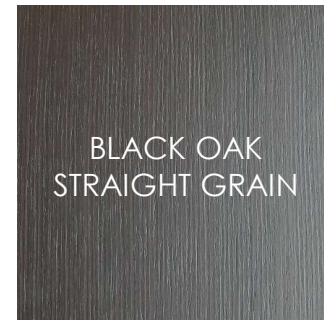
Additional Species are available



# TREEFROG VENEERS



treefrog is a prefinished, real wood veneer laminate



Additional Species are available



# SPECIFYING CUSTOM VENEERS

**RUTT not only produces cabinetry from traditional lumber but also excels at crafting unique looks with veneers.**

- Can be used as door/drawer center panel inserts for a more transitional/traditional design
- Specify on Lucerne/Villa Savoye for contemporary designs
- Not all veneers have matching edge banding readily available. For frameless consider how casework edge banding will be achieved
- Available by special quote - market price
- Requires extended lead-times, sample door approvals, and careful attention to all details.



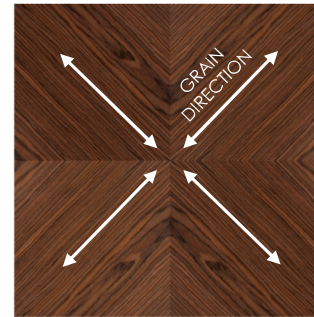
APPLEWOOD VENEER - HORIZONTAL GRAIN MATCHED



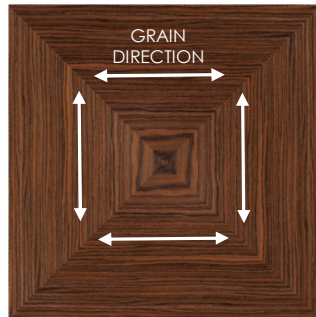
# VENEERS – MATCH PATTERNS



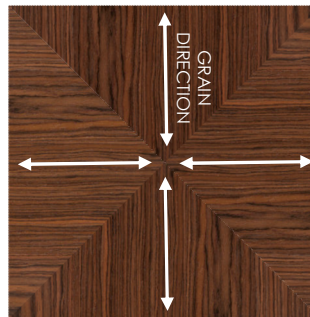
DIAMOND MATCH



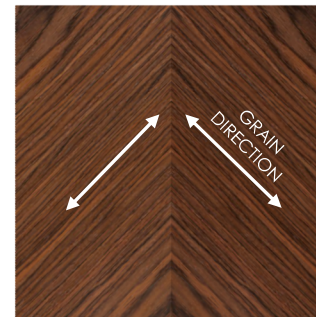
REVERSE DIAMOND MATCH



BOX MATCH



REVERSE BOX MATCH



HERRINGBONE MATCH



# VENEERS – BOOK & BUTT MATCH PATTERN



Burl Veneer Shown